



RPG Surface Prep and Industrial Services

152 Blades Ln, Suite M, Glen Burnie, MD 21060 • 1-800-RPG-4073

NEW BATTERY PLANT PROCESS FLOOR COATING

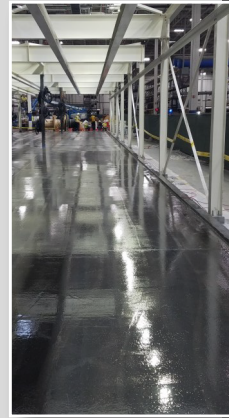
This battery plants 20,000 SF new production floor needed an acid resistant coating system to handle the constant exposure to Sulfuric Acid and abrasion from the various production line systems. They chose the Ergon Novocoat SC3300 coating and RPG Surface Prep for the install.



RH in the slab was reading 99%. This forced us to make the decision to use a moisture mitigating primer in order to keep on schedule and have no construction showdowns.



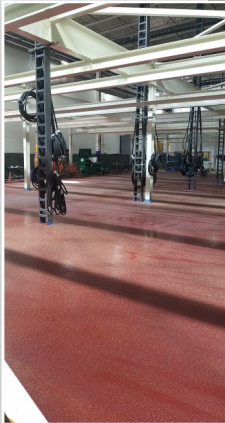
Utilizing our 2-20" Blast Trac machines we were able to prepare the 20,000 SF in one day keeping the project on schedule.



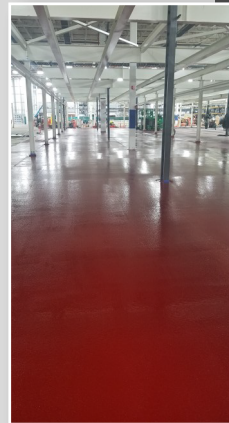
Using the AC Tech 2170 Low Viscosity Moisture Mitigating Primer with its 4 hour minimum overcoat window, we were able to stay on schedule with the following topcoats.



With our broadcast machine we applied a 1/2 lb. per sq. foot slip deterrent system of a graded #1 mesh throughout the 20,000 SF. This machine disburses the mesh evenly and without clumping for a more effective and uniform application.



The first coat of the Ergon Novocoat SC3300 went on with squeegees and rollers to achieve a uniform 20 mil coat throughout.



The second and final coat of the Ergon Novocoat SC3300 went on again with squeegees and rollers to achieve another uniform 20 mil coat throughout. The total system was 52 mils DFT.



Holes from entrained air on the sides of the slab were filled with a mixture of Cabosil and the Ergon SC3300 to maintain the maximum chemical resistance throughout the production platform.



The final step was to fill all control joints and expansion joints with the chemical resistant Ergon TuffChem II elastomeric joint material for a complete monolithic system resistant to the 98% sulfuric acid.

Contact RPG Surface Prep for a full line of chemical lining solutions for:

- Chemical Plants
- Power Generation
- Water and Wastewater
- Food Service
- Pulp and Paper
- Pharmaceutical
- Petro - Chemical
- Anywhere that expert applications of lining systems are critical